




Brennan & Co
Industrial



www.brennanco.ie

Laboratory
BROCHURE



Cleaning & Decontamination

- ↻ Autoclaves
- ↻ Parts Washers
- ↻ Consumables/Disinfection
- ↻ Bofa Extraction
- ↻ Air Samplers

03



Laboratory Equipment

- ↻ Bio Safety Cabinets
- ↻ Laminar Airflow Cabinets
- ↻ Centrifuges
- ↻ Microscopes – General & Analytical
- ↻ Stirrers, Shakers & Pumps
- ↻ Fume Hoods
- ↻ Recirculating Chemical Storage
- ↻ Lab Furniture

06



Temperature & Environmental Control

- ↻ Fridge/Freezers
- ↻ ULT Freezers
- ↻ Lab Freeze Dryers
- ↻ Ovens & Furnaces
- ↻ Climatic Chambers
- ↻ Water Baths
- ↻ Liquid Nitrogen Containers
- ↻ Laboratory Conditions Monitoring

11



Environmental Monitoring

- ↻ EMS Systems
- ↻ Temperature Sensors
- ↻ Thermal Validation Loggers

15



Cell Culture

- ↻ Shakers/Incubators
- ↻ Bio Reactors
- ↻ DO/PH/Redox Sensors
- ↻ Chillers
- ↻ R&D Reagents

17



Analytical

- ↻ Dissolution Equipment
- ↻ Meters - General
- ↻ Handheld PH & Conductivity Meters
- ↻ Analytical Balances
- ↻ Scales
- ↻ Mass Comparators
- ↻ Refractometers
- ↻ Polarimeters
- ↻ Density Meters
- ↻ Gas Analysis Meters

20



Modular Cleanrooms

- ↻ Modular Cleanrooms

25



Molecular Biology Reagents

- ↻ Molecular Imaging – Gel Documentation
- ↻ R&D Reagents

26



Laboratory Consumables

- ↻ Consumables

28



Sample Storage & Handling

- ↻ Sample Tubes & Instruments

29



Food Lab Testing

- ↻ PCR Food Testing
- ↻ Antibiotic Residue Testing
- ↻ Automated Colony Counters
- ↻ Lateral Flow Test Readers

30



Utilities

- ↻ Water Purification
- ↻ Energy/Legionella

32



Engineering

- ↻ Engineering Services

33



Autoclaves



CLEANING &
DECONTAMINATION



- High-performance, reliability, and versatility characterize our sterilizing autoclaves
- Front-loading and top-loading configurations, suitable for any size facility thanks to an extensive range; tabletop to BSL-rated wall-mounted pass-thru double-enders
- Best-in-class technologies provide unrivaled efficiency levels to reduce energy and water consumption
- Solutions suitable for basic research right up to BSL 4

Parts Washers



Getinge offers a comprehensive range of Getinge Lancer Ultima Freestanding Laboratory Washers/Dryers to meet the specific capacity and cleaning requirements for the utensils and glassware in your laboratory

- Multiple-level direct-injection washing supporting high throughput in a compact footprint
- Efficient and ergonomically friendly loading, coupled with reliable and repeatable cleaning of glassware and utensils
- User-friendly interface while improving reprocessing efficiency with preset and custom cycles
- High-quality construction for a long-lasting investment





Consumables / Disinfection



Wipes/Swabs/Mops

- Brennan&Co SVS offers a variety of wipers/swabs/mops for Pharmaceutical, Medical Device, Electronics and Laboratory applications
- Our trained product specialists can help you identify the optimum solution for your requirements including any sustainability needs
- The wiper families include polyester sealed-border and sealed-edge wipers for the most critical environments and a variety of cut-edge wipers for less critical areas
- All products are tested for fibres, particles, ions, residue, and endotoxin to ensure exceptional cleanliness for consistent quality and high performance



Chemicals

- A range of chemicals available for all applications within Cleanroom and Lab environment, such as; IPA, Ethanol, Acetone, Purified Water, etc
- Available in Sterile and Non Sterile format
- Ability to decant to any size container – whatever best suits our customers' requirements



Bofa Extraction



CLEANING &
DECONTAMINATION

- BOFA has been at the forefront of innovation in portable fume and dust extraction technology for over 35 years, helping to deliver solutions globally to manufacturing and laboratory applications
- BOFA offer market leading technology including their Intelligent Operating Systems; allowing users to see real-time information such as filter condition and airflow. An important tool for critical environments
- Extraction solutions for applications such as; Chemicals, Soldering, Dust, Laser and Additive Manufacturing/3D Printing
- BOFA HEPA filters are tested to filter 99.995% @ 0.3 microns



Air Samplers

- The Spin Air sampler give users a compact, portable, simple solution to air sampling
- Spin Air's biological efficiency has been certified to the standards of EN 17141:2020
- This sampling technology uses 100% of the Petri plate agar surface to plate microorganisms avoiding the use of colony count correction tables.
- Full traceability including LIMS compatibility





Biosafety Cabinets



LABORATORY
EQUIPMENT



- The LabGard® ES (Energy Saver) Class II, Type A2 Biosafety Cabinet (BSC) is a bench/table top model with available base stand options
- Economical operation through the use of our single ultra-high efficiency DC ECM blower to reduce energy consumption and maximize filter load capacity
- FlowGard™ Electronic Control System
- Greatest degree of versatility of available options and accessories as well as a 254mm access opening
- Monolithic Pressure Tight Design (Silicone Free)
- HEPEX Zero Leak Airflow
- Front Filter Removal



Laminar Airflow Cabinets



- AeroMax Electronic Control System
- Ultra-high Efficiency DC/ECM Motor
- PressureFlow Airflow Monitor and Control
- HEPEX Zero Leak Airflow System
- True Laminar Airflow
- Pre-Filter System
- Metal Frame Supply Separatorless HEPA Filter 99.99% efficient @ 0.3 micron
- ISO Class 5 Air
- Backwall Metal Diffuser with Quick Clean Removal





Centrifuges



AFI Centrifuge has created a range of equipment to suit your needs and applications. The centrifuges are also suitable for processing small and large volumes

- Micro-centrifuges for small scale operations right up to large volume centrifuges for high throughput hospitals/medical analysis laboratories
- Refrigerated and ventilated options across the range
- User-friendly interface with ergonomic design and low level noise and vibration – ideal for a busy lab
- Quick change of rotors, without the need for tools and automatic recognition of rotor and imbalance detection



Microscopes - General & Analytical



- FHD image quality 1080p @ 60FPS
- Smart Applications such as Measurement Software and PNG Reference
- Huge Ergonomic benefits
- Auto Focus with instantaneous photo & video capture
- Analytical Microscopes – Monocular, Binocular and Inverted models





Stirrers, Shakers & Pumps



- Micro-centrifuges for small scale operations right up to large volume centrifuges for high throughput hospitals/medical analysis laboratories
- Refrigerated and ventilated options across the range
- User-friendly interface with ergonomic design and low level noise and vibration – ideal for a busy lab
- Quick change of rotors, without the need for tools and automatic recognition of rotor and imbalance detection



- Smart In-line homogenizers
- Powerful drive motors
- Stainless steel dispersing tools
- Ceramic sealed tools available
- Universal tube connectors





- Smart In-line homogenizers
- Powerful drive motors
- Stainless steel dispersing tools
- Ceramic sealed tools available
- Universal tube connectors



- High precision pumps
- Single channel/Multi channel pumps
- High degree of precision & reproducibility
- Large variety of pump heads available



Fume Hoods



- Ducted & Recirculating Fume Cupboard options
- Every model includes animated colour LCD display showing the airflow is working within safe and calibrated parameters
- The Circulaire® Recirculating Filtration Fume Cupboard is fitted with ultra-deep Activated Carbon or HEPA filters to guarantee maximum fume filtration efficiency
- Designed to have both low noise levels and low energy consumption to help your company stay carbon neutral



Recirculating Chemical Storage



- The Circulaire® Chemical Storage units provide an effective and safe solution for storage of Formalin, Formaldehyde, Peracetic Acid and other chemicals
- The chemicals are housed behind two lockable smoked acrylic doors for added security and kept on a multi-positional shelving system.
- Constant ventilation and Ultra Deep Carbon Filters enhance removal of fumes.
- COSHH Compliant.





Lab Furniture



- REECO are a Polish manufacturer of quality Laboratory and Manufacturing Furniture, for over 30 years Reeco has been developing solutions that improve the quality of work and the productivity of employees



Fridges / Freezers



TEMPERATURE &
ENVIRONMENTAL CONTROL



- The Labcold laboratory range of refrigerators and freezers have been designed and developed to meet the demands of scientific and medical professionals
- Labcold's Laboratory refrigeration range includes Spark-free fridges and freezers
- Powered by Labcold's IntelliCold controller for excellent temperature stability





ULT Freezers



- Hydrocarbon (HC) Refrigerants
- Audible & Visible Alarms
- Outer Door Handle with Locking Claw Latch
- Individual Latching, Insulated Inner Doors
- Vacuum Insulated Panels (VIP)



Lab Freeze Dryers

Experience, expertise and versatility for your freeze drying

- Compact, high-performance laboratory systems with a small footprint
- Low noise level: 54 dB(A) according to DIN 45635
- Drying chamber above the ice condenser chamber for high sublimation performance and short process times
- Ice condenser chamber with internal condenser coils, entirely made of high-grade stainless steel (type 316L)
- Modular structure for an extremely wide range of applications
- Extensible with a large range of accessories to suit your task





Ovens & Furnaces



Carbolite is a leading manufacturer of high temperature furnaces and ovens from 30°C to 3000°C.

- Ovens – Laboratory, Clean Room, Industrial, Atmosphere Control
- Chamber Furnaces – Laboratory, Industrial, Ashing, Annealing
- Tube Furnaces – Universal, Split, Rotary, Gradient
- Vacuum Furnaces - Laboratory, Chamber, Hood, Bottom Loading, Tube Furnaces

Carbolite products are defined by their superior energy efficiency as well as excellent reliability and use of high-quality components.



Climatic Chambers



- Stability testing, Peltier, Walk-in, Plant Growth & custom chambers available
- High-end simulation of environmental conditions
- Extremely precise control of temperature and humidity
- Adjustable air circulation
- Whisper-quiet operation
- Freely configurable audiovisual alarms
- Intuitive control unit with LC display and various programs





Water Baths



- Digital 10/20 litre Laboratory water bath
- Temperature range: ambient to 100°C
- Powerful Circulation Pump assures Temp. Uniformity
- Digital PID temperature controller +/- 0.1 °C
- Corrosion-resistant stainless-steel chamber
- Includes hood



Liquid Nitrogen Containers



- Narrow neck design and excellent thermal conductivity reduces evaporation loss of liquid nitrogen to extend storage times
- Available in 6 – 35 litre volumes
- Strong and lightweight aluminium construction
- Heavy duty lockable enclosure offers excellent security
- LN2 dispense pump available
- Roller bases available





Laboratory Conditions Monitoring



- Accurate monitoring of Laboratory Fridge/ Freezer/Incubator & Ambient Temperature
- Offers a managed system to include data hosting, audit trails and out of threshold notifications in Real Time via Email/SMS & Text to Speech
- Can be expanded to monitor laboratory equipment performance such as Agitators, Cryogenics, O2/CO2 levels & Power failure status
- Completely standalone and operates independently of any site IT Systems



EMS Systems



ENVIRONMENTAL MONITORING

- Lab scale or site-wide Environmental Monitoring system
- Fully compliant to 21CFR Part 11, Data Integrity & Annex 1 guidelines
- Monitoring of multiple variables – Temp, Diff Pressure, Humidity, CO2, Particle Count
- Wired or Wireless instrument integration available
- Full IQ.OQ Package provided





Temperature Sensors



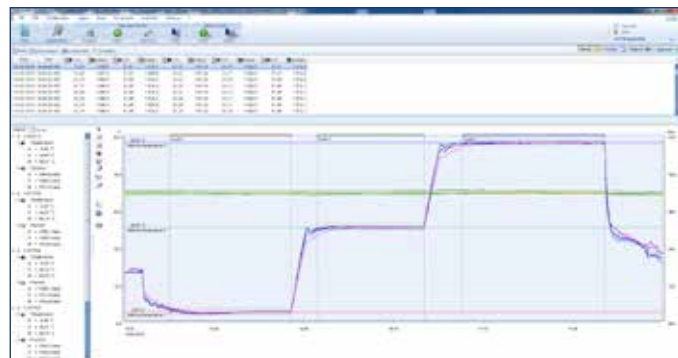
- Best in class accuracy
- Robust and Reliable design
- Customizable to meet specific process requirements
- Easy Installation and maintenance



Thermal Validation Loggers



- Thermal Mapping Validation of Autoclaves, Washers, Ovens, Stability/Climatic Chambers & all product storage applications
- A fully automated mapping solution with dedicated reports and data analysis
- Full wireless & radio loggers available plus Thermocouple loggers for wired applications
- Full compliance to 21CFR Part 11, EN 554, ISO 17665, EN 13060 & EN 285 regs





Shakers / Incubators



CELL
CULTURE



- Large interior cabinet space to accommodate the following per tray:
 - 5 L Erlenmeyer flasks (6 quantity)
 - 5 L Thomson flasks (7 quantity)
 - 96-well plates (80 quantity)
- Designed for easy and safe operation, the system has perfect working heights, even to the top cabinet (triple-stack: 140 cm), and pull-out trays with automatic lock and unlock features
- Tight control of temperature, humidity, and CO₂ across the incubator shaker ensures identical conditions for every batch. Excellent insulation and avoiding condensation in the incubator cabinet keep energy demand low
- Delivered stacked at its maximum height, while maintaining the ability to easily pass through standard laboratory doorways, ensuring convenient transportation and installation



- In-VitroCell ES (Energy Saver) CO₂ Incubators are designed to provide a reliable controlled in-vitro environment for optimum tissue cell culture growth as well as the storage and preservation of gametes and animal tissue cell cultures intended for research at or near body temperature
- In-VitroCell CO₂ Incubators provides accurate and precise control of humidity, temperature, CO₂, and sterility
- NuTouch Electronic Control System
- Temperature Uniformity & Recovery
- Contamination Free Design
- Dual Sterilisation Cycles (optional)





Bio Reactors



The Minifors 2 is a compact and easy-to-use bioreactor with a full range of application possibilities

- Available in total volumes of 1.5 L, 3 L and 6 L
- Powerful direct drive optimized for cell cultures and microorganisms
- Quick and easy change between culture vessel sizes
- Rounded flat vessel bottom – Low minimum working volume – Good mixing – Stability with or without a vessel holder
- Safe sampling without any dead volume: INFORS HT Super Safe Sampler



DO/PH/Redox Sensors



- Integration with Bio-reactors and test vessels
- Single-use or fixed sensor options





Chillers



Julabo's PRESTO chillers provide fast, precise temperature control with wide ranges and strong cooling capacity. They're ideal for demanding chemical, pharmaceutical, and industrial applications, offering reliability, durability, and seamless integration in complex environments.

- For highly precise, external temperature applications
- Rapid heating and cooling
- Wide working temperature ranges without changing fluids
- Highest performance with small footprint
- Space-saving design optimizes space utilization in your lab
- Ethernet interface
- SD-Card slot
- Highly dynamic ICC temperature control, stability to $\pm 0.01^\circ\text{C}$
- Electronic level indication
- Integrated programmer
- Unsurpassed power and efficiency
- Profibus DP (Accessory)





R&D Reagents



GMP-Compliant Cell Culture Media

- EXCiPACT™ GMP-certified in compliance with ISO 9001:2015
- Full Access to regulatory and quality compliance documentations (including EXCiPACT™ audit)
- No on-site audit needed - regulatory burden greatly reduced
- Full traceability of raw materials



HLA-Typed Human Primary Cells

- Broad range of HLA-typed cells for research – ready to use and immediately available
- Access to HLA-Typing Certificate with 4-digit resolution (HLA-A, -B, -C, -DPA1/DPB1, -DQA1/DQB1, and -DRB1/DRB345)
- Matched donors for multiple cell types
- Single donor with requested HLA-type, no negative testing

Dissolution Equipment



ANALYTICAL



- Industry leader of Dissolution Testing Instrumentation
- Supplier of Waterbath and Bathless Dissolution Systems
- Supplier of Dissolution Samplers and optional Filter Changers
- Supplier of static and mobile Media Preparation Systems
- Fiber optic UV Dissolution Systems
- Validation Services, PVT and Qualification Services
- Automated UV and HPLC Tablet Dissolution Systems





Meters - General



Our flame photometers achieve high-precision and reproducible measurement results and are a simple and particularly cost-effective alternative to analysis techniques such as ICP or AAS

- Reliable, simultaneous measurement of up to five alkaline and alkaline earth elements
- For operation with low sample volume
- Very high precision
- Maximum operational safety through intelligent security mechanisms
- Compliance with international standards such as GMP / GLP and 21 CFR Part 11



- Refractometers
- Polarimeters
- Density Meters
- Melting Point Meters
- Gas Analysers

Handheld PH & Conductivity Meters



- Handheld/Portable meters for measurement of PH & Conductivity
- Repeatability of ± 0.01 PH and $\pm 2\%$ Conductivity
- Tough and waterproof construction (IP67)
- Accurate, reliable and repeatable measurements
- Customizable to a wide variety of solutions to meet specific requirements
- User friendly and modular design





Analytical Balances



- Readability [d]: 0.01 mg - 0.1 mg
- Automatic leveling
- Automatically opened weighing chamber
- Remote operation and settings customization
- 5" touch screen
- Compliance with GLP and GMP requirements including 21CFR Part 11
- Spacious weighing chamber with Integrated antistatic ionizer



Scales



- Multiple models & display interfaces available
- Readability [d]: 0.2 g - 100 g
- Maximum capacity [Max]: 0.6 kg - 300 kg
- Built in memory for data storage
- IP43 Terminal rating





Mass Comparators



- Options from Manual to Automatic to Robotic Mass Comparator systems
- Wide range of options from 1mg to 2000kg
- A supplementary external anti-draft chamber comes standard
- Manual system offers automatically opened transparent weighing chamber providing maximum resistance to air drafts
- Self-centering pan or weighing pan with mechanical centering aid



Refractometers



- Wide range of models – Digital benchtop, Handheld & Abbe
- Highly accurate and reproducible measurement results
- Semi-automatic and fully automatic working models
- Fast to fill and clean
- Sample tray made of stainless steel





Polarimeters



- High-speed polarimeters fastest in the world with patented technology
- Reduced measurement time to approx. 1 s regardless of the sample's angle of rotation
- Achieve a high measurement accuracy of up to $\pm 0.002^\circ$
- Optional Water bath or Peltier temperature control as well as an automatic operation
- Suitable for use in FDA regulated applications



Density Meters



- Fast, reliable measurement using the oscillating U-tube method
- Manual, Semi-Automatic and Fully Automatic options
- Small footprint and an intelligent user interface
- Compliance with GMP/GLP, 21 CFR Part 11, pharmacopoeias (USP, Ph. Eur.), FDA, ISO, HACCP, NIST





Gas Analysis Meters



- Modified Atmosphere Testers (MAT) are suitable for both the random sampling and the permanent monitoring of the gas mixture used on packaging machines
- Standard & Precision measurement of O₂ and CO₂
- Low-drift zirconium dioxide sensor (ZrO₂) in the measuring range from 0 to 100 vol.-%
- Low-drift non-dispersive infrared sensor (NDIR) measures CO₂ in the measuring range from 0 to 100 vol.-% with an accuracy of ± 0.5 vol.-%
- Compliance with global standards such as GMP/GLP and 21 CFR Part 11 (Audit Trail)



Modular Cleanrooms



CLEANROOMS



- Range of custom-built, ISO Class Modular Cleanrooms
- Clean Air Modules (CAM) use H14 HEPA filters with 99.997 % efficiency at 0.3 microns create a clean air environment
- A variety of levels of cleanliness can be achieved in accordance with ISO Cleanroom BS EN ISO 14644-1 Standards
- Constructed from free-standing aluminium framework and assembled on site in just a few hours





Molecular Imaging – Gel Documentation



MOLECULAR BIOLOGY
REAGENTS

- Auto-exposure and auto-focus
- Automatic light illumination control
- Protocol driven image acquisition
- Smart sensors to identify the sample distance
- Fully motorized lens and filter wheel
- Reproducible and comparable quantification data
- ImageMaster™ technology to obtain the optimum image for quantification



R&D Reagents



Molecular Diagnostics & Manufacturing Industries

- Products for PCR, qPCR, RT-qPCR and isothermal amplification based molecular diagnostics.
- DNA & RNA library prep kits and modules, enzymes, adapters & primers for Next Generation Sequencing
- Glycobiology reagents for structural characterization of glycans and glycosylated proteins. For example, native and recombinant PNGase F and other glycosidases
- GMP-grade IVT kits and stand-alone enzymes supporting commercial scale mRNA manufacturing in compliance with regulatory guidelines
- GMP-grade restriction enzymes and polymerases enabling commercially approved Nucleic Acid Therapeutic product manufacturing



OEM & Customized solutions

- Diverse portfolio of Lyophilized and lyo-compatible products
- BSA & Glycerol free composition scalability at user defined concentration
- Automation friendly custom packaging



Primary & Secondary Antibodies

- Custom concentrations & carrier-free formulations
- Fully validated conjugation & labelling Service
- Matched antibody pairs for development of high-throughput ELISA
- Bulk quantities and lot reservation

Multiplex IHC for Spatial Profiling

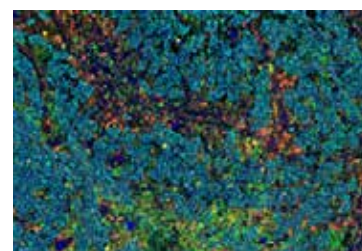
SignalStar™ is a patented revolutionary new tool which amplifies multiple biomarkers simultaneously in FFPE tissue with high sensitivity and specificity

- Accurate, reproducible and reliable data, even from low expression, can be generated on up to 8 targets in just 2 days
- Full flexibility with online tool to build panel to work out of the box
- Compatible with instruments having channels 488, 594, 647 & 750 nm
- Apply all antibodies at once and eliminate antibody cycling

Proteomics

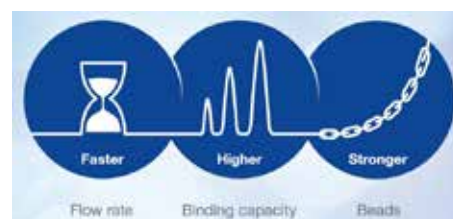
PTMScan® is a proprietary proteomic technology that couples antibody enrichment of PTM-containing peptides with liquid chromatography-mass spectrometry (LC-MS/MS), allowing for identification and quantification of hundreds to thousands of low abundance PTM peptides

- Consultative service is available to discuss project goals and provide actionable advice to keep projects on track



Protein Purification Resins

- Chromatography resins, for purification of mAbs, proteins, peptides, oligonucleotides, viruses and vaccines
- Unique composition of porous agarose beads with tight bead- and pore-size distribution giving outstanding purity, high binding capacity and high flow rates
- Reproducible scale-up, lower total production costs and better process reliability.
- Suitable across a wide range of applications: affinity chromatography, IMAC, IEX, SEC, desalting/buffer exchange
- Available in standard and custom pre-packed columns, or bulk resin format
- Certified according to the international standard ISO 9001:2015





Consumables



LABORATORY
CONSUMABLES

SVS - PPE Gear; ANSELL Gloves, Glassware

- Specialists in the supply of Cleanroom, Laboratory and ESD PPE
- Representatives of ANSELL Gloves; the Global Leader in Gloves for various industries, such as chemical, mechanical, healthcare and cleanroom
- High quality glassware with DWK



Swann Morton - surgical blades, scalpels and handles

- Swann-Morton is a world leader in the manufacture of surgical scalpel blades, handles and disposable scalpels. The company supplies a range of surgical blades and handles commonly used in manufacturing and healthcare environments due to the world famous quality



FST - Fine Surgical Instruments for Research and Medical Device Manufacturing

- Precision microsurgical instruments for scientific, biomedical research and manufacturing processes with over 50 years of expertise
- The best scissor on the planet for suture cutting. A procedure every valve maker needs thousands of scissors for
- The most sold cutting tweezer for catheter manufacturing
- Fine Forceps, one of FSTs bestsellers



Sample Tubes & Instruments



SAMPLE STORAGE
& HANDLING

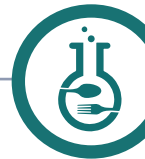


- Applications include bio-banking, compound management, consumer genomics, synthetic biology and basic research
- Tubes and plates in a range of volumes, suitable to all temperatures right down to cryogenic storage
- 2D, dual- and tri-coding options. Internal or external threading
- Whole-rack or single-tube readers and scanners compatible with most 2D-coded sample tubes available
- FrameStar® 2-component microplates with reduced thermal expansion and sample evaporation
Range includes fully- & semi- and non-skirted microplates and strip/divisible format
- Manual, semi- and fully-automated capping, de-capping, sealers and peelers, matching any level of throughput
- A comprehensive, scalable, web-based sample inventory management system ideal for organizing collections ranging from low throughput to central bio-banks





PCR Food Testing



FOOD LAB
TESTING

- Modern rapid quantitative results based PCR system
- Easy to use and reliable software
- Compatible for Food & Water testing
- Open platform capable of working with other PCR kits



- PCR Liquid handling platform for DNA extraction
- Capacity to run up to 500 samples in an 8 hour shift
- Designed to make lab resources more efficient
- Perfect for medium to high test throughput labs



Antibiotic Residue Testing



- Complete traceability for each sample
- Detects over 100 residues
- Rapid results in 13 minutes
- Simple to use and easy reporting systems in place



- Multiplex Technology
- Comparable to LCMS
- Multi Matrix capability
- Extensive Test menu





Automated Colony Counters



- SphereFlash® is a one-size-fits-all solution that reads automatically different types of plates with the same instrument
- Count the CFU in just one click with Artificial Intelligence of SphereFlash® AI Colony Counting Software
- High Resolution detection of colonies of 0.046 mm using SphereFlash® AI and Colonies PRO Software
- LIMS compatible and 21CFR Part 11 compliant



Lateral Flow Test Readers



- Lateral Flow Readers iPeak® are open-system rapid test readers compatible with most tests on the market
- iPeak®: qualify, quantify and semi-qualify most colorimetric lateral flow tests
- Wide dynamic range and high sensitivity avoiding false-negative results
- Built-in barcode reader, USB port, WiFi, secure real-time connection to LIS with HL7 protocol





Water Purification



UTILITIES

- Advanced industrial and laboratory water purification technology
- Optimized solutions for their water, process and wastewater
- Range of advanced water purification technologies, including reverse osmosis, activated carbon, ion exchange, deionisation, electro-deionisation, UV (ultra-violet), ozone disinfection and chemical dosing.
- For low and high-volume applications, and with water quality to 18.2 MW.cm



Energy / Legionella

- Robust, Non-invasive monitoring of Energy Consumption in Real Time
- Informs Management of consumption levels and system performances
- Demonstrates performance levels in achieving sustainability targets
- Confirms compliance with international energy standards eg. EN50001

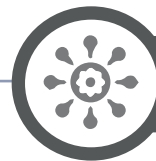


- Non-Invasive monitoring of Supply Water Flow Temperatures in combatting legionella proliferation
- Automatic weekly & monthly reporting of water temperature performances
- Informs Facility Managers on water supply network temperatures within buildings
- Confirms accuracy flushing policies and compliance with HTM04-Part B & National Guidelines





Engineering Services



ENGINEERING



We provide full **Installation, Commissioning** and **Support** services for all equipment supplied and 3rd party devices

- Full Service, Commissioning & Qualification packages for Instrumentation and Controlled environments such as Biological Safety Cabinets, LAF workstations, PCR hoods, Fumehoods and Cleanrooms



Using best-in-class **Calibration** equipment we offer a broad range of field Calibration services:

- Thermometers, Pressure/ pH/ conductivity/ Dissolved Oxygen meters, Centrifuges, Balances, Autoclaves, Washers, Dissolution Baths, UV-VIS Spectrometer and Turbidity meters



Our team offers an extensive range of Wireless & Wired logger to perform **Thermal Mapping** exercises on Laboratory Equipment.

- Temperature controlled enclosures: Fridges, Freezers, Incubators, Ovens & Walk-in Rooms
- Autoclaves & Parts Washers



AGENCIES



Priorclave

GETINGE *

iUL

Steelco

NUAIRE

BOFA



AFI
Group

Reeco

TAGARNO

CAT

NUAIRE

KRÜSS
A. KRÜSS OPTRONIC
GERMANY

Monmouth Scientific



LABCOLD
Specialist in Laboratory Refrigeration

NUAIRE

Invisible Systems

CHRIST

CARBOLITE
a VERDER company

mrc

Kambië



mirrhia

BURNS ENGINEERING

TMI
TMI-ORION

YOKOGAWA



NUAIRE

INFORS HT

Julabo
THE TEMPERATURE CONTROL COMPANY

PromoCell

Broadley James



DiSTEK

YOKOGAWA

DISSOLUTION ACCESSORIES

analytikjena
An Endress+Hauser Company

KRÜSS
A. KRÜSS OPTRONIC
GERMANY

RADWAG

AUTOMATED ANALYTICAL

AGENCIES



Monmouth
Scientific



Bio-Works

Cell Signaling
TECHNOLOGY®

NEW ENGLAND
Biolabs®

VILBER
Smart Imaging



Ansell

F · S · T
FINE SCIENCE TOOLS

Swann-Morton®
Made in Sheffield - England



AZENTA
LIFE SCIENCES



BIO-RAD

CHRIST

unisensor
DIAGNOSTIC ENGINEERING

IUL



suez

Invisible
Systems



Service

Entities

1. Brennan & Co

61 Birch Avenue, Stillorgan
Industrial Estate, Sandyford
Business District, Co. Dublin,
Ireland, A94 XW6

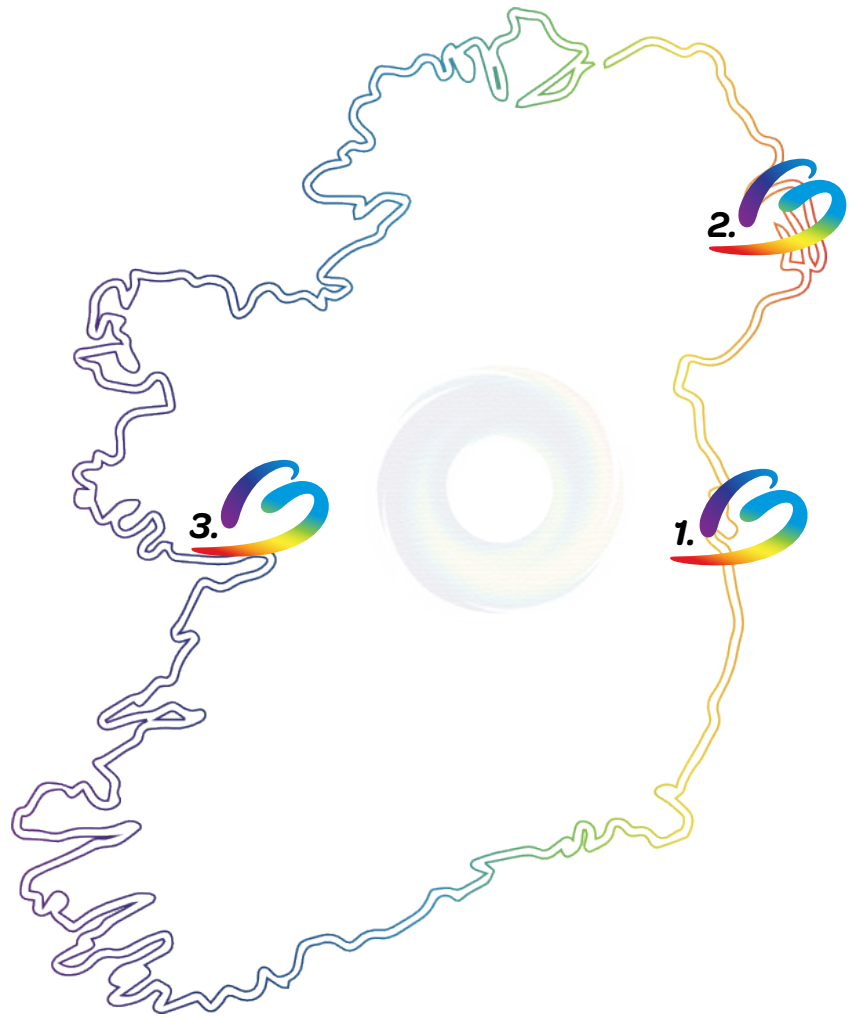
2. Brennan & Co NI

Unit 6 & 7, Carrowreagh
Business Park, Dundonald,
Belfast, Northern Ireland,
BT161QQ

3. Brennan & Co SVS

Irish Power & Process

Ballybrit Upper Industrial
Estate, Monivea Road, Galway,
Ireland, H91K7H9



The Brennan & Co Group

At the heart of innovation



Brennan & Co
At the heart of innovation



Brennan & Co SVS
At the heart of innovation



Brennan & Co NI
At the heart of innovation



Industrial



Service



Healthcare

t: 01 295 2501 e: lab@brennanco.ie