

New Products from CST—May 2026

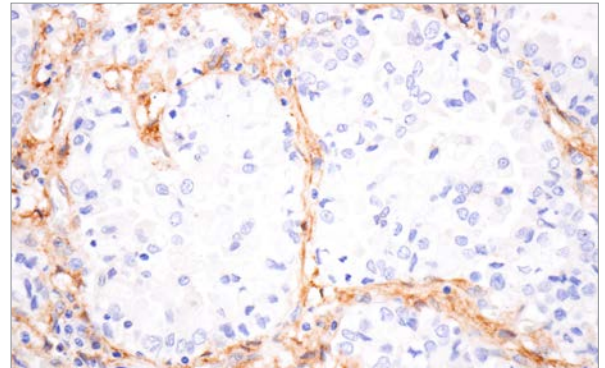
We are continually expanding our portfolio to meet your research needs. Check out the new products released this month!

Integrin beta-5 (F9C2U) Rabbit Monoclonal Antibody #79602

Mediator of Cell Adhesion and Signal Transduction

Integrin beta-5 is a receptor that primarily forms the complex $\alpha\beta5$ with its α subunit and binds to extracellular matrix components such as vitronectin. It plays a crucial role in regulating cell adhesion, migration, proliferation, angiogenesis, and phagocytosis. Depending on the extracellular environment, it is known to activate FAK and MAPK/ERK pathways, promoting cell survival and proliferation, as well as sensing intracellular signals and altering interactions with the extracellular environment. Integrin $\alpha\beta5$ plays an important role in growth factor-induced tumor angiogenesis, and it has been reported that coordinated signal transduction between Integrin $\alpha\beta5$ and growth factors controls endothelial cell proliferation and survival. #79602 is suitable for IHC-P and IF-IC using human samples. For IF-F and IF-IC using mouse samples, #27874 is suitable.

KEYWORDS: Extracellular matrix, Epithelial-mesenchymal transition (EMT), Tumor microenvironment (TME)



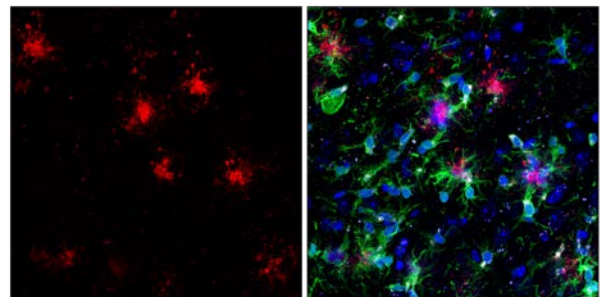
IHC-P: IHC analysis of paraffin-embedded human small cell lung carcinoma using #79602.

beta-Amyloid (1-40) (D8Q7I) Horse Chimeric Monoclonal Antibody #77438 beta-Amyloid (1-40) (D8Q7I) Feline Chimeric Monoclonal Antibody #51867 beta-Amyloid (1-40) (D8Q7I) Mouse Chimeric Monoclonal Antibody #99675

Proteins that accumulate in the brain in Alzheimer's disease

Amyloid β ($A\beta$) is a peptide that is cleaved from APP and aggregates and accumulates in the brain. The main variants are $A\beta_{1-42}$, which has high aggregation properties and forms the nuclei of senile plaques from the early stages of the disease, and $A\beta_{1-40}$, which is characterized by deposition in the blood vessel walls (CAA: cerebral amyloid angiopathy). #77438, 51867, and 99675, which can specifically detect $A\beta_{1-40}$, are chimeric antibodies in which only the Fc region has been rearranged to horse, cat, and mouse. Simultaneously, multiplex immunohistochemistry using antibodies for different host markers such as nerves and neuroinflammation allows for accurate evaluation of the spatial relationships around lesions. #77438, 51867, and 99675 are suitable for IF-F using human samples, and reactivity in mouse, rat, monkey, and bovine samples is predicted based on the homology of the recognized amino acid sequences.

KEYWORDS: Alzheimer's disease, protein aggregation



IFF-F: Confocal IF analysis of fixed frozen brain from an amyloid mouse model of Alzheimer's disease labeled with #77438 (red), Iba1/AIF-1 (E4O4W) Feline Chimeric Monoclonal Antibody #87276 (green), TREM2 (E7O7Q) Rabbit Monoclonal Antibody #89956 (gray), and ProLong Gold Antifade Reagent with DAPI #8961 (blue). Rabbit primary antibody is detected using an anti-rabbit Fc-specific secondary antibody.



Learn more at
cellsignal.com/newproducts

PRODUCT	APPLICATIONS	REACTIVITY
Cell Biology - Adhesion/Extracellular Matrix		
27874S Integrin beta-5 (F7H2Y) Rabbit Monoclonal Antibody	IF-F, IF-IC	H, M
27874T		
79602S Integrin beta-5 (F9C2U) Rabbit Monoclonal Antibody	IHC-P, IF-IC	H
79602T		
84405S Thyl/CD90 (D3V8A) Rabbit Monoclonal Antibody (Alexa Fluor® 750 Conjugate)	IHC-P	H, M, R
Cell Biology - Apoptosis		
60434P Bim (C34C5) Rabbit Monoclonal Antibody (Biotinylated)	WB, ELISA+	H, M, R, (Mk, B, Dg, Pg)
45277S MST4 (F5E7I) Rabbit Monoclonal Antibody	WB, IP, IF-IC, FC-FP	H, M, R, Mk
45277T		
74731P Puma (E2P7G) Rabbit Monoclonal Antibody (Biotinylated)	WB, ELISA+	H, M
Cell Biology - Cell Cycle		
26004S Ki-67 (D3B5) Rabbit Monoclonal Antibody (Alexa Fluor® 405 Conjugate)	FC-FP	H, M, R
32223S p16 INK4A (D7C1M) Rabbit Monoclonal Antibody (Alexa Fluor® 488 Conjugate)	FC-FP	H
59003P PLK1 (208G4) Rabbit Monoclonal Antibody (Biotinylated)	WB, ELISA+	H, R, Mk
58110S Phospho-Rb (Ser807/811) (D20B12) Rabbit Monoclonal Antibody (mFluor™ Violet 510 Conjugate)	FC-FP	H, M, R, Mk
Cell Biology - Cytoskeletal		
96963S Pan-Keratin MultiMab® Rabbit Monoclonal Antibody mix	WB, IHC-P	H, M, R
96963T		
80988S Pan-Keratin (C11) Mouse Monoclonal Antibody (mFluor™ UV375 Conjugate)	FC-FP	H, M, R, Mk
39230S Pan-Keratin (Type II) (F6G1P) Rabbit Monoclonal Antibody (Alexa Fluor® 488 Conjugate)	IHC-P	H, M, R
56412S Pan-Keratin (Type II) (F6G1P) Rabbit Monoclonal Antibody (Alexa Fluor® 555 Conjugate)	IHC-P	H, M, R
94414S Pan-Keratin (Type II) (F6G1P) Rabbit Monoclonal Antibody (Alexa Fluor® 647 Conjugate)	IHC-P	H, M, R
54065S Nestin (E5C7I) Rabbit Monoclonal Antibody (Alexa Fluor® 555 Conjugate)	IF-F, IF-IC	M, R
71474S Phospho-Rac1/cdc42 (Ser71) (F4Q8K) Rabbit Monoclonal Antibody	WB, IP	H, M, R
71474T		
63001S Septin-2 (F8U8G) Rabbit Monoclonal Antibody	WB, IF-IC	H, M, R
63001T		
Cell Biology - Cytoskeletal Signaling		
93125S PRC1 (F7C7R) Rabbit Monoclonal Antibody	WB	H, Mk
93125T		
Cell Biology - Developmental Biology		
19521P TCF4/TCF7L2 (C48H11) Rabbit Monoclonal Antibody (Biotinylated)	WB, ELISA+	H, (M, C)
Cell Biology - Proteostasis		
28723S mAID-Tag (F4L5V) Rabbit Monoclonal Antibody	WB	All
28723T		
96626S RNF114 (F9Y8B) Rabbit Monoclonal Antibody	WB, IP	H, M, R
96626T		
52291S TRIM2 (F1S4A) Rabbit Monoclonal Antibody	WB, IP	H, M, R
52291T		
Cell Biology - Ubiquitin and Ubiquitin-like proteins		
30419S HERC4 (F7D4D) Rabbit Monoclonal Antibody	WB, IP	H, M, R, Mk
30419T		
Cell Biology - Vesicle and Protein Trafficking		
43858S LAMP1 (D2D11) Rabbit Monoclonal Antibody (Alexa Fluor® 555 Conjugate)	IHC-P, IF-IC, FC-FP	H, Mk
53186S SNAP29 (F7Y8J) Rabbit Monoclonal Antibody	WB, IP, IF-IC	H
53186T		
Complementary Ab - Isotype		
85876S Mouse (G3A1) Monoclonal Antibody IgG1 Isotype Control (mFluor™ UV375 Conjugate)	FC-FP	-
93720S Mouse (E5Y6Q) Monoclonal Antibody IgG2a Isotype Control (mFluor™ UV375 Conjugate)	FC-FP	-
Complementary Ab - TAG		
44815S DYKDDDDK Tag (D6W5B) Rabbit Monoclonal Antibody (Binds to same epitope as Sigma-Aldrich Anti-FLAG M2 antibody) (Alexa Fluor® 405 Conjugate)	FC-FP	All
73605C PathScan® RP GST-Tag Sandwich ELISA Kit	ELISA+	All
43402S His-Tag (D3I10) Rabbit Monoclonal Antibody (Alexa Fluor® 405 Conjugate)	FC-FP	All
59551S Myc-Tag (9B11) Mouse Monoclonal Antibody (mFluor™ UV375 Conjugate)	FC-FP	All
84881C PathScan® RP Myc-Tag/DYKDDDDK Tag (Binds to same epitope as Sigma-Aldrich Anti-FLAG M2 antibody) Sandwich ELISA Kit	ELISA+	All
Developmental Biology - DIFFERENTIATION - Transcription Factor		
43305P C/EBP alpha (D56F10) Rabbit Monoclonal Antibody (Biotinylated)	WB, ELISA+	H, M, (R)



Learn more at
cellsignal.com/newproducts



Cell Signaling
 TECHNOLOGY®

PRODUCT	APPLICATIONS	REACTIVITY
Developmental Biology - HIPPO		
73943S VGLL3 (F6Q1G) Rabbit Monoclonal Antibody	WB, IP	H, M, R
73943T		
92094S VGLL3 (F6X1O) Rabbit Monoclonal Antibody	WB, IP, IF-IC, FC-FP	H
92094T		
Developmental Biology - TGFβ/BMP		
17026S Dvl1 (F8K9L) Rabbit Monoclonal Antibody	WB, IP	H, R
17026T		
92141P SMAD5 (D4G2) Rabbit Monoclonal Antibody (Biotinylated)	WB, ELISA+	H, M, R, Mk
67869S ZNRF3 (F1H6K) Rabbit Monoclonal Antibody	WB	H
67869T		
Epigenetics - Chromatin Acylation and Phosphorylation		
96136S Phospho-BRD4 (Ser1126) (F7L7H) Rabbit Monoclonal Antibody	WB, IP, IF-IC	H
96136T		
89598S Tri-Methyl-Histone H3 (Lys4) (C42D8) Rabbit Monoclonal Antibody (Alexa Fluor® 488 Conjugate)	FC-FP	H, M, R, Mk, Dm, Sc, (X, Z)
29556P HMGB1 (D3E5) Rabbit Monoclonal Antibody (Biotinylated)	WB, ELISA+	H, M, R, Mk, (C, B, Hr, Rab)
Epigenetics - General Transcription Factors		
19835S EWS (F9H8X) Rabbit Monoclonal Antibody	WB, IP	H, M, R, Mk
19835T		
Epigenetics - Histones and Histone Modifications		
94984S Phospho-Histone H3 (Ser10) (D7N8E) Rabbit Monoclonal Antibody (Alexa Fluor® 647 Conjugate)	IHC-P, FC-FP	H, M, R, Mk, (Hm, X, Sc)
20298S Acetyl-Histone H3 (Lys27) (D5E4) Rabbit Monoclonal Antibody (Alexa Fluor® 700 Conjugate)	FC-FP	H, M, R, Mk, (Hm, X, Z, Hr, GP, Rab)
Epigenetics - Nuclear Receptor Signaling		
40065P Androgen Receptor (D6F11) Rabbit Monoclonal Antibody (Biotinylated)	WB, ELISA+	H
Epigenetics - Nuclear Receptors		
96849S ROR gamma/ROR gamma(t) (F1S2O) Rabbit Monoclonal Antibody	WB, IP, FC-FP	H
96849T		
96493P Vitamin D3 Receptor (D2K6W) Rabbit Monoclonal Antibody (Biotinylated)	WB, ELISA+	H, M, (Hm, B, Pg, Hr)
Epigenetics - RNA Splicing, Capping, Polyadenylation		
46810S RBM20 (F1Z2J) Rabbit Monoclonal Antibody	WB, IP, IF-IC	H
46810T		
Epigenetics - RNA Stability & Decay		
23387S Phospho-UPF1 (Ser1107) (F4Z2W) Rabbit Monoclonal Antibody	WB, IP	H, M, R, Mk
23387T		
Epigenetics - Translational Control		
16824P eIF4E (C46H6) Rabbit Monoclonal Antibody (Biotinylated)	WB, ELISA+	H, M, R, Mk
45093SF eRF3a (F9H3X) Rabbit Monoclonal Antibody (BSA and Azide Free)	WB	H, M, R, Mk
51433S RPS2 (F3V3T) Rabbit Monoclonal Antibody	WB	H, M, R, Mk
51433T		
56574S VARS (F7B1D) Rabbit Monoclonal Antibody	WB	H, M, R, Mk
56574T		
Immunology - Autoimmunity and Inflammation		
44423S RANK (E2N2Y) Rabbit Monoclonal Antibody (Alexa Fluor® 647 Conjugate)	FC-FP	H
Immunology - Immune Checkpoints and Ligands		
37542S PD-1 (NAT105) Mouse Monoclonal Antibody (Alexa Fluor® 488 Conjugate)	FC-L	H
15118P PD-L1 (E1L3N) Rabbit Monoclonal Antibody (Biotinylated)	WB, ELISA+	H
Immunology - Immunology and Inflammation		
40229S MCP-8 (F6M5L) Rabbit Monoclonal Antibody	WB, IF-F	M
40229T		
64297S beta2-microglobulin (D8PIH) Rabbit Monoclonal Antibody (Alexa Fluor® 488 Conjugate)	IHC-P, IF-IC, FC-FP	H, Mk
84633S NFAT1 (D43B1) Rabbit Monoclonal Antibody (Alexa Fluor® 555 Conjugate)	FC-FP	H, M
40052S Phospho-STING (Ser366) (E9A9K) Rabbit Monoclonal Antibody (Alexa Fluor® 647 Conjugate)	IF-IC	H
30495P Phospho-STING (Ser366) (E9A9K) Rabbit Monoclonal Antibody (Biotinylated)	WB, ELISA+	H
Immunology - Inflammasome		
43697S ASC/TMS1 (E1E3I) Rabbit Monoclonal Antibody (Alexa Fluor® 555 Conjugate)	IHC-P	H
53993S ASC/TMS1 (E1E3I) Rabbit Monoclonal Antibody (Alexa Fluor® 750 Conjugate)	IHC-P	H
45033S Ifi204 (F8V8K) Rabbit Monoclonal Antibody	WB, IP, IF-F, IF-IC	M
45033T		
Immunology - Jak/Stat Signaling		
88617P Jak1 (6G4) Rabbit Monoclonal Antibody (Biotinylated)	WB, ELISA+	H, M, R, Mk, (Mk, Dg, Pg)



Learn more at
cellsignal.com/newproducts



Cell Signaling
 TECHNOLOGY®

PRODUCT	APPLICATIONS	REACTIVITY
Immunology - Jak/Stat Signaling (cont.)		
53579SF Phospho-Stat1 (Tyr701) (F5S4Y) Mouse Monoclonal Antibody (BSA and Azide Free)	ELISA+	H, M, R
54907S Phospho-Stat1 (Tyr701) Matched Antibody Pair II	ELISA+	H, M
Immunology - Lymphocyte Signaling		
42059S OLR1/LOX1 (F6B1T) Rabbit Monoclonal Antibody	IF-IC, FC-FP, FC-L	H
42059T		
Immunology - NFkappaB Signaling		
25841S GILZ (F2U9K) Rabbit Monoclonal Antibody	WB, IP, FC-FP	H, M
25841T		
34894S TRIAD3 (F2Q1B) Rabbit Monoclonal Antibody	WB	M
34894T		
Immunology - Phenotyping and Functional Markers		
34857S CD20 (E7B7T) Rabbit Monoclonal Antibody (Alexa Fluor® 750 Conjugate)	IHC-P	H, Mk
51565S CD31 (PECAM-1) (F2N3M) Feline Chimeric Monoclonal Antibody	IF-F	M, R
51565T		
64517S CD31 (PECAM-1) (F2N3M) Horse Chimeric Monoclonal Antibody	IF-F	M, R
64517T		
85320S CD31 (PECAM-1) (F2N3M) Mouse Chimeric Monoclonal Antibody	IF-F	M, R
85320T		
10143S CD45 (Intracellular Domain) (D9M8I) Rabbit Monoclonal Antibody (Alexa Fluor® 594 Conjugate)	IHC-P, FC-FP	H, Mk
40895S ENPP3/CD203c (F3B3Y) Rabbit Monoclonal Antibody	WB	H, M, R
40895T		
41242S FMC63 scFv (F2Q8G) Rabbit Monoclonal Antibody (Alexa Fluor® 488 Conjugate)	FC-FP, FC-L	All
16494S FMC63 scFv (F2Q8G) Rabbit Monoclonal Antibody (Alexa Fluor® 647 Conjugate)	FC-FP, FC-L	All
87980S FMC63 scFv (F2Q8G) Rabbit Monoclonal Antibody (PE Conjugate)	FC-FP, FC-L	All
55751P IgM (E9U8J) Rabbit Monoclonal Antibody (Biotinylated)	WB, ELISA+	H, (Chimp)
37690S LY6E (F8Y1R) Rabbit Monoclonal Antibody	WB, IHC-P, FC-FP	H
37690T		
34257S Tryptase (E7M2U) Rabbit Monoclonal Antibody (Alexa Fluor® 488 Conjugate)	IHC-P	H, M
90784S Tryptase (E7M2U) Rabbit Monoclonal Antibody (Alexa Fluor® 647 Conjugate)	IHC-P	H, M
Metabolism - Biochemical Metabolism and Signaling - Amino acids		
23208S mu-Crystallin/CRYM (F9K9H) Rabbit Monoclonal Antibody	WB, IP	H, M, R
23208T		
Metabolism - Biochemical Metabolism and Signaling - Carbohydrates		
46951S NEU3 (F4D9G) Rabbit Monoclonal Antibody	WB, IP	H
46951T		
Metabolism - Biochemical Metabolism and Signaling - Drugs, Co-factors, Secondary Metabolites & Vitamins		
40387SF Osteocalcin (E8B9X) Rabbit Monoclonal Antibody (BSA and Azide Free)	WB, IHC-P	H
Metabolism - Biochemical Metabolism and Signaling - Insulin & Glucose		
2969P Phospho-IGF-I Receptor beta (Tyr1135/1136)/Insulin Receptor beta (Tyr1150/1151) (19H7) Rabbit Monoclonal Antibody (Biotinylated)	WB, ELISA+	H, M, R, (B, Dg)
Metabolism - Biochemical Metabolism and Signaling - Lipids		
87701S ACBD3 (F2U4L) Rabbit Monoclonal Antibody	WB, IP	H, M, R, Mk
87701T		
96927S DGKtheta (F1I5V) Rabbit Monoclonal Antibody	WB	H
96927T		
92216S ZDHHC8 (F9L4O) Rabbit Monoclonal Antibody	WB, IP	H, M, R
92216T		
Metabolism - Biochemical Metabolism and Signaling - Nucleotides		
66095S ATIC (F6Z3O) Rabbit Monoclonal Antibody	WB, IP	H, M, R
66095T		
76663S Na,K-ATPase alpha1 (F7K1P) Rabbit Monoclonal Antibody (Alexa Fluor® 488 Conjugate)	IHC-P	H, M, R
62505S Na,K-ATPase alpha1 (F7K1P) Rabbit Monoclonal Antibody (Alexa Fluor® 555 Conjugate)	IHC-P	H, M, R
97571S Na,K-ATPase alpha1 (F7K1P) Rabbit Monoclonal Antibody (Alexa Fluor® 647 Conjugate)	IHC-P	H, M, R
81156S RIT1 (F9C2F) Rabbit Monoclonal Antibody	WB	H, M, R
81156T		
Metabolism - Ca, cAMP and Lipid Signaling		
10067S ApoB (F8V5F) Rabbit Monoclonal Antibody	WB	H
10067T		



Learn more at
cellsignal.com/newproducts



Cell Signaling
 TECHNOLOGY®

PRODUCT	APPLICATIONS	REACTIVITY
Metabolism - REDOX/Energy Metabolism		
66048S ANT3/SLC25A6 (F1B8T) Rabbit Monoclonal Antibody	WB, IP, IF-IC	H
66048T		
17100SF COX IV (D614K) Rabbit Monoclonal Antibody (BSA and Azide Free)	WB, IHC-P, ELISA+	M, R
70304S COX IV Matched Antibody Pair	ELISA+	H, M, R, Mk
41560P HIF-1 alpha (D1S7W) Rabbit Monoclonal Antibody (Biotinylated)	WB, ELISA+	H, M, Mk
23844S UQCRC1 (F4P3Z) Rabbit Monoclonal Antibody	WB, IP	H, M, R
23844T		
Neuroscience - Alzheimer's disease		
60972SF beta-Amyloid (1-37) (D2A6H) Rabbit Monoclonal Antibody (BSA and Azide Free)	WB	H, (M, R, Mk, B)
51867S beta-Amyloid (1-40) (D8Q7I) Feline Chimeric Monoclonal Antibody	IF-F	H, (M, R, Mk, B)
51867T		
77438S beta-Amyloid (1-40) (D8Q7I) Horse Chimeric Monoclonal Antibody	IF-F	H, (M, R, Mk, B)
77438T		
99675S beta-Amyloid (1-40) (D8Q7I) Mouse Chimeric Monoclonal Antibody	IF-F	H, (M, R, Mk, B)
99675T		
98668S beta-Amyloid (D54D2) Feline Chimeric Monoclonal Antibody	IF-F	H, M
98668T		
52585S beta-Amyloid (D54D2) Horse Chimeric Monoclonal Antibody	IF-F	H, M
52585T		
65912S beta-Amyloid (D54D2) Mouse Chimeric Monoclonal Antibody	IF-F	H, M
65912T		
46854S CD11b/ITGAM Matched Antibody Pair	ELISA+	H
81258S LRP8/ApoER2 (F6T1L) Rabbit Monoclonal Antibody	WB, IP	H, M, R
81258T		
87324P Tau (D5D8N) Rabbit Monoclonal Antibody (Biotinylated)	E-P	H, M, R
96767P Tau (Tau46) Mouse Monoclonal Antibody (Biotinylated)	WB, ELISA+	H, M, R, (B)
Neuroscience - Neural function (neurite extension, axonal guidance, synaptogenesis, myelination and neuron-glia cell interactions)		
47084P GFAP (D1F4Q) Rabbit Monoclonal Antibody (Biotinylated)	WB, ELISA+	H, M, R
Neuroscience - Parkinson's disease		
79642S alpha-Synuclein (E4U2F) Feline Chimeric Monoclonal Antibody	IF-F	H, M, R
79642T		
88046S alpha-Synuclein (E4U2F) Horse Chimeric Monoclonal Antibody	IF-F	H, M, R
88046T		
56187S alpha-Synuclein (E4U2F) Mouse Chimeric Monoclonal Antibody	IF-F	H, M, R
56187T		
86390S Phospho-alpha-Synuclein (Ser129) (D1R1R) Mouse Chimeric Monoclonal Antibody	IF-F	H, M, R
86390T		
Neuroscience - Post-synapse		
23928S Neuroligin (pan) (F1H7H) Rabbit Monoclonal Antibody	WB, IP, IF-F	M, R, (H)
23928T		
73413S SynGAP-gamma (F3C8W) Rabbit Monoclonal Antibody	WB	M, R
73413T		
Neuroscience - Pre-synapse & transmitters		
33447SF DDC (D6N8N) Rabbit Monoclonal Antibody (BSA and Azide Free)	WB	H, M, R
Neuroscience - Receptor signaling: GPCRs, ion channels, RTKs-Neuro, transporters (SLC & ABC)		
42684S CD97 (F1B5E) Rabbit Monoclonal Antibody	WB, IHC-P	H
42684T		
93936S RGS5 (F6D1S) Rabbit Monoclonal Antibody	WB	H
93936T		
90744SF TrkB (80E3) Rabbit Monoclonal Antibody (BSA and Azide Free)	WB	H, M, R
81054SF Phospho-TrkA (Tyr785)/TrkB (Tyr816) (C67C8) Rabbit Monoclonal Antibody (BSA and Azide Free)	WB	H
41495S VMAT1/SLC18A1 (F3V6D) Rabbit Monoclonal Antibody	WB, IHC-P	H
41495T		
Related Products - Secondary Antibody		
86381P Goat Anti-Rabbit IgG (H+L) Antibody (trFluor™ Europium Cryptate Conjugate)	E-P	Rab

© 2026 Cell Signaling Technology, Inc. CST, Cell Signaling Technology, and InTraSeq are registered trademarks of Cell Signaling Technology, Inc. 10x Genomics, 10x, Feature Barcode, and Chromium are the trademarks or registered trademarks of 10x Genomics, Inc. All other trademarks are the property of their respective owners. Visit cellsignal.com/trademarks for more information. Subject to patents licensed from 10x Genomics, Inc., for use with single-cell (i.e., Chromium) 10x products.



Learn more at
cellsignal.com/newproducts

